



CERTIFICATE OF ANALYSIS

01.09.2022

Page 1

Art.-No. Description 006394 - 15LRP
Licorice Root Powder RAD. LIQUIRITIAE NAT.
PULV. SUBT. LICORICE ROOT NAT. FINE POWDER
Batch-No: 4481307
Best Before Date: Sept 2025
Testing Instruction: KS 200228

Test Results:

Identity: conforms
Smell: conforms
Taste: conforms
TLC: conforms
Macroscopic: conforms
Microscopic: conforms
Purity test: conforms

	RESULT	MAX
Specification:	7.0%	10,0%
Loss on drying: Ashes:	9.4%	15,0%
HCL-insoluble ashes:	4.4%	5,0%
Foreign matters:	<2,0%	2,0%

	RESULT	MAX
Other foreign matters:		
ochratoxine A	4,9 µg / kg	20 µg / kg



**CERTIFICATE OF ANALYSIS
VERSION 2**

01.09.2022
Page 2

The test results shown above refer to the tested sample.

The lot has been tested according to the specification and according to the latest scientific facts. The lot has the required quality:

☒ yes

☐ no

☒ released for sale

☐ not released

☐ released for production

Chief of Quality Control: Dr. G. Binder

Date 20.05.2021

Expiry date: 11.2023

Batch has been manufactured and tested in proper form according to the latest regulations of law (AMWHV und GMP).

Information: The quality of the delivered lot can only be guaranteed in the range of the analytics that have been performed and certified.

Depending on the intended use of the material further analytics might be necessary!

(computer document - valid without signature)



Labelling of allergens

We herewith certify that according to regulation (EU) No 1169/2011 of the European parliament and the council of 25 October 2011 the products:

Licorice Root Powder

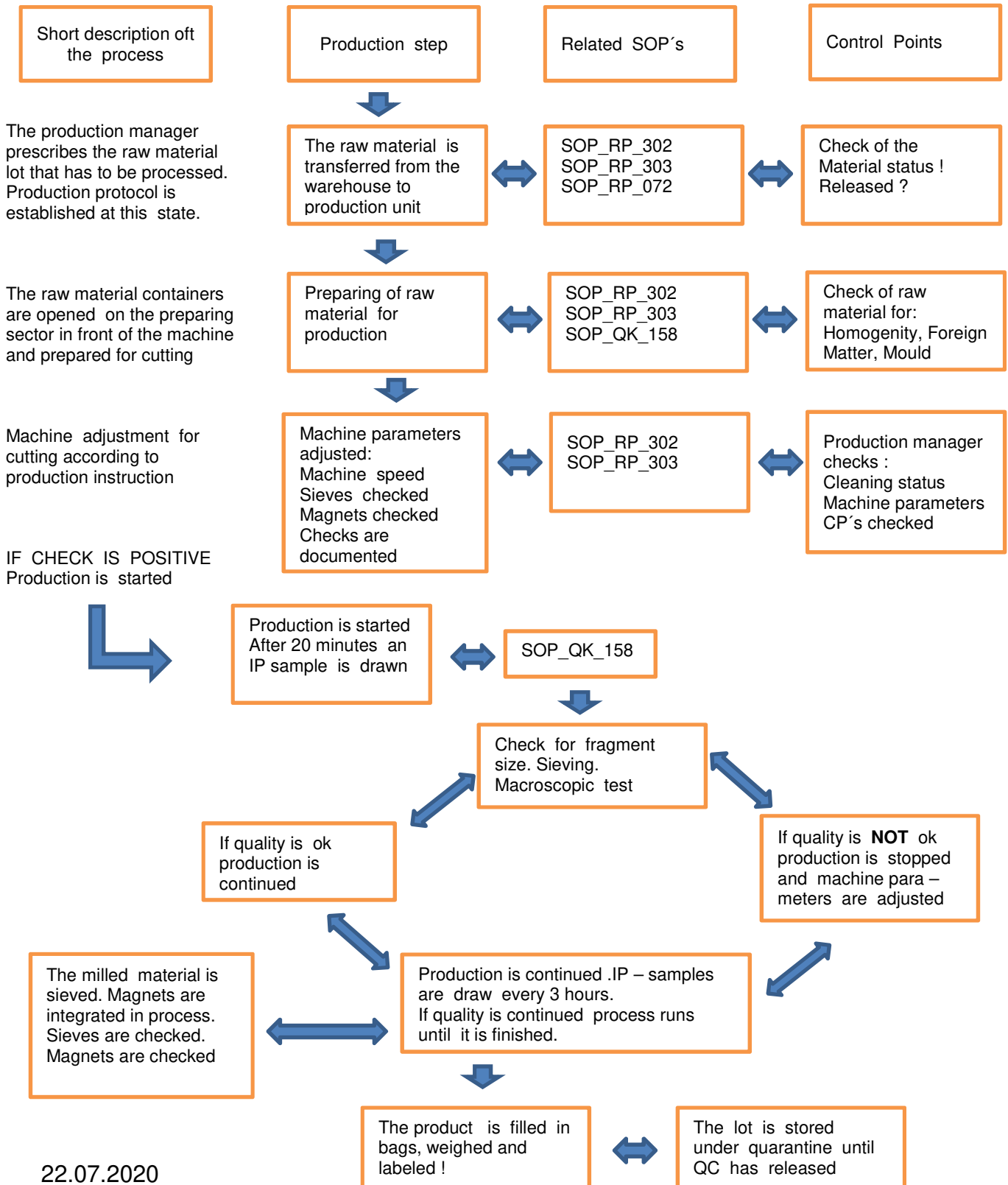
do not contain the following ingredients

- Cereals containing gluten (i.e. wheat, rye, barley, oats, spelt, kamut or their hybridised strains) and products thereof.
- Crustaceans and products thereof.
- Eggs and products thereof.
- Fish and products thereof.
- Peanuts and products thereof.
- Soybeans and products thereof.
- Milk and products thereof (including lactose).
- Nuts, i.e. almonds (*Amygdalus communis L.*), hazelnuts (*Corylus avellana*), walnuts (*Juglans regia*), cashews (*Anacardium occidentale*), pecan nuts (*Carya illinoensis (Wangenh.) K. Koch*), Brazil nuts (*Bertholletia excelsa*), pistachio nuts (*Pistacia vera*), macadamia nuts and Queensland nuts (*Macadamia ternifolia*), and products thereof.
- Celery and products thereof.
- Mustard and products thereof.
- Sesame seeds and products thereof.
- Sulphur dioxide and sulphites at concentrations of more than 10 mg/kg expressed as SO₂.
- Lupin and products thereof.
- Molluscs and products thereof.

11.08.2021

Flow Chart Production : Licorice Root

Flow chart for the production



22.07.2020



GMO STATEMENT

We hereby certify and confirm, that the below item we are supplying does not contain GMO material, nor has been in contact with any GMO treated material during its storage and processing.

VEGAN/ VEGETARIAN STATEMENT

We hereby certify that the below item we are supplying is suitable for vegan and vegetarian.

Licorice Root Powder

11.08.2021

safety data sheet
according to EU Reg. No.: 1907/2006



actuality 08.2021
revised on: 09.07.2009
data sheet No.: 100403
version: 3

printing date 11.08.2021
Seite 1

1. description of the substance resp. the mixture and the company

1.1 information about the product

product name Licorice Root Powder -Radix Liquiritiae Pulver/
form Concis/Feinschnitt
mother plant Glycyrrhiza glabra L.

1.2 information about the producer / supplier

Supplier Madar Corporation Limited
19 - 20 Sandleheath Industrial
Estate, Fordingbridge, SP6 1PA

1.3 further information by:

telephone: 01425 655 555
e-mail: technical@madarcorporation.co.uk

2. Possible Danger

2.1 Possible Risks, Health Hazards

Keine bekannt

2.2 additional hazard statement for humans and environment

Keine

3. composition / information about contents

3.1 Ingredients

Glycyrrhizinsäure

3.2 hazardous ingredients

Keine

3.3 substances with specified EU limits:

none !

4. first aid measures

4.1 description of the first aid measures

skin contact: wash with water ! inhaling: cough up as far as possible, drink water ! swallowing larger quantities: initiate vomiting !

4.2 hints for the doctor

Keine besonderen Hinweise

5. fire fighting measures

use of conventional extinguishers i.e. ABC fire extinguisher, CO 2 extinguisher, foam

6. necessary measures in case of uncontrolled release

6.1 personal related precautionary measures

respiratory protection

6.2 environment related protection measures:

none

6.3 cleaning / pick up

no specific protection measures necessary. Mechanical removal from the floor sufficient

7. handling and storage

7.1 instructions for handling and storage

store cool and dry protected against light
dry storage in paper bags

7.2 fire protection measures

avoid open light and fire, do not smoke

8. exposition limit and personal protection equipment

8.1 limited concentration

none known

8.2 personal protection measures

during processing and production:

wear dust mask

19-20 Sandleheath Industrial Estate, Fordingbridge, Hampshire, SP6 1PA, UK

Tel: 01425 655555 Email: technical@madarcorporation.co.uk

safety data sheet
according to EU Reg. No.: 1907/2006



actuality 08.2021
revised on: 09.07.2009
data sheet No.: 100403
version: 3

printing date 11.08.2021
Seite 2

9. physical and chemical properties

9.1 nature

plant material dried

9.2 organoleptic properties

charakteristischer, aromatischer Geruch

sehr süßer Geschmack

Die Rinde ist nicht bitter.

9.3 relevant safety data

Keine besonderen Spezifikationen

10. stability and reactivity

do not expose to direct sunlight

11. toxicity

nicht toxisch

12. ecology

Indifferent

13. disposal

with organic waste

14. transport

protect against humidity in tightly closed containers

15. legislation

no specific regulation

16. further information

keine !

valid EU regulations

none

application limit

none

end of the safety data sheet

Article description:	Licorice Root Powder - Radix Liquiritiae nat. (mund.)
Synonym:	Süßholzwurzel (geschält oder ungeschält), Lakritzenwurzel, Liquorice root
Testing Instruction:	Ph.Eur.10.0 /0277
Article number:	6390 bis 6399, 6380 bis 6389
Plant of origin:	Glycyrrhiza glabra L.und G. inflata Bat., G. uralensis Fisch., Fabaceae
Country of origin:	Turkey, Iran, China
Definition:	Dried unpeeled or peeled, whole or cut root and stolons of Glycyrrhiza glabra and/or Glycyrrhiza inflata and/or Glycyrrhiza uralensis.
Product classific.	Medicine

Parameter:	Test instruction: Given values:
-------------------	--

Identity:

Odour / Smell:	Characteristic, aromatic odour; very sweet taste. The bark is not bitter.
Macroscopy:	The root has few branches. Its bark is brownish-grey or brown with longitudinal striations (naturally). The fracture is granular and fibrous. The cork layer is thin; the secondary phloem region is thick and light yellow with radial striations. The external part of the bark is absent from the peeled root.
Microscopy:	The powder is light yellow or faintly greyish. Fibres up to 1200 µm long and 10-20 µm wide with a punctiform lumen. Cells containing prisms of calcium oxalate. Fragments of cork (are absent from the peeled root). Simple, round or oval starch granules, 2-20 µm in diameter.

<u>TLC-test:</u>	Ph. Eur.2.2.27	complies with reference chromatogram
-------------------------	----------------	--------------------------------------

Purity:

Loss on drying:	Ph. Eur.2.2.32	Max. 10,0%
Ash:	Ph. Eur.2.4.16	Max. 10,0% (mund. 6,0%)
Ash insoluble in HCl:	Ph. Eur.2.8.1	Max. 2,0% (mund. 0,5%)
Foreign matter:	Ph. Eur.2.8.2	Max. 2%

Other foreign substances:

ochratoxine A	Max 20 µg / kg
---------------	----------------

Content:

18β-Glycyrrhizic acid	Ph. Eur.2.2.29	Min. 4,0 %(dried drug)
-----------------------	----------------	------------------------

Shelf-life:	36 months
--------------------	-----------